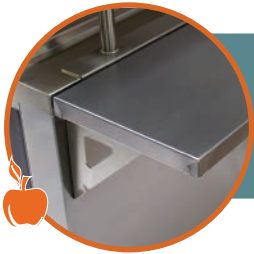




ALL NEW
BREAKFAST CART

START THEIR DAY, THE RIGHT WAY

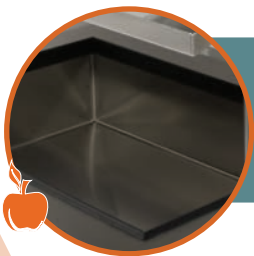
Studies have shown students that begin their day with a healthy breakfast, perform better in school. However, students don't have the opportunity to go eat in the cafeteria or have time to eat at home. Advance Tabco's all new mobile Breakfast Cart allows to have balanced breakfast items readily available where student traffic is the heaviest — the hallways! It features an insulated ice bin, two angled over-shelves, cashier shelf, handle and four heavy duty casters (two with brakes). Ample storage space available on the backside of the cart, which can fit hot/cold holding cabinets (provided by others) — allowing hot foods stay hot and cold foods stay cold, longer. Overall, the mobile breakfast cart will help save time and labor, making school food programs run more efficiently.



STAINLESS STEEL SHELF
 - Supported by two welded brackets
 - Can be used for portable cash register or condiments



FIXED OVER-SHELVES
 - Angled for display and easy access
 - Turn-up on three sides prevents items from falling



BUILT-IN INSULATED ICE BIN
 - 8 3/4" Deep with corner drain
 - Rubber thermal breaker reduces condensation

ADDITIONAL DROP-DROWN SHELF AVAILABLE
 Front Mount Only



REMOVABLE MAGNET
 (SHOWN)

Our in-house graphics department will help you develop a concept to promote everything from healthy eating to school spirit to special events.



STAINLESS STEEL BREAKFAST CART

FEATURES:

Insulated ice bin with 1" IPS drain.
 Stainless steel end shelf and angled table mounted overshelves.
 Bolt-on handle and 5" casters (2 with brakes) for easy mobility.
 Stainless steel undershelf for storage with undermount support channels.

CONSTRUCTION:

All stainless steel construction.
 Top welded to cabinet base.
 Fully welded overshelves mounted via bolt-on brackets to unit.

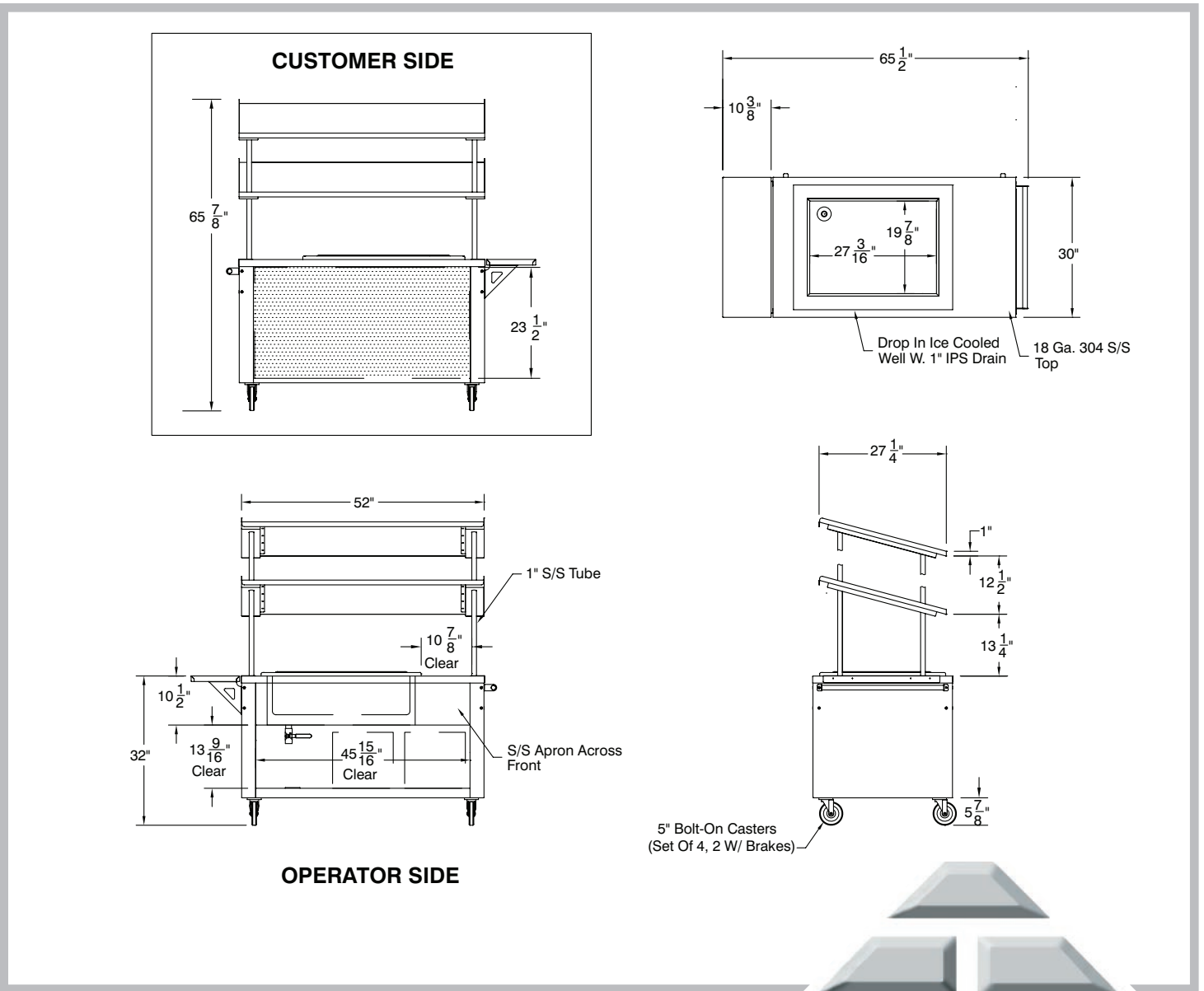
MATERIALS:

Top: 18 Ga., 304 Stainless Steel
Base: 18 Ga., 430 Stainless Steel
Overshelf: 16 Ga., 304 Stainless Steel
End Shelf: 18 Ga., 304 Stainless Steel

DIMENSIONS and SPECIFICATIONS

TOL ± .500"

ALL DIMENSIONS ARE TYPICAL



ADVANCE TABCO is constantly engaged in a program of improving our products. Therefore, we reserve the right to change specifications without prior notice.

© ADVANCE TABCO, DECEMBER 2019

ADVANCE TABCO
SMART FABRICATION™

www.advancetabco.com
800.645.3166 | customer@advancetabco.com