

# CUSTODIAL

Service Equipment

## Additional Products Available:

### Flush Mount Floor Mop Sink



Easy Mop Bucket  
Roll In Design



Removable Grate  
Stainless Steel or Fiberglass



Removable  
Basket & Drain



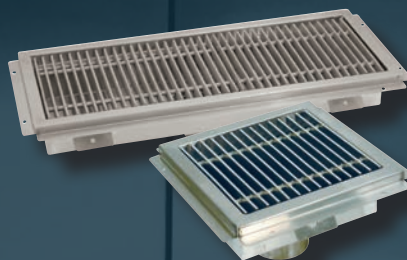
### MOP SINK CABINETS

- 84" High
- Stainless Steel Construction
- Single or Double Width Models Available



### FLOOR MOP SINKS

- Includes Mounting Hardware
- Standard & Drop-Front Models Available



### FLOOR TROUGHS & DRAINS

- 12", 18" & 24" Floor Trough Models
- Floor Drains & Water Receptacles Models Available

*A.D.A. Compliant Grate Upgrade Available*



## MODULAR BAR DIE SYSTEM (#PR-BARDIE)

Made Exclusively For Advance Tabco's Prestige Series Underbar Equipment

*Floor Templates  
Available*



### FEATURES & BENEFITS



Removable  
Perforated  
Drainboards  
*(Where Applies)*



Stainless Steel  
Apron, Sides  
& Legs



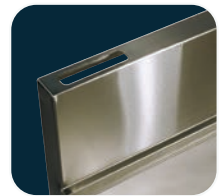
7" High  
Backsplash w/  
1-3/4" Return



Available In  
Multiple Widths



Adj. Stainless  
Steel Side  
Cross-Bracing



Ice Bins w/ Cold  
Plates Include  
Soda Gun  
Knockout



SEALED HOT WELLS | STANDARD HOT WELLS  
REFRIGERATED | NON-REFRIGERATED

# HOT/COLD

Food Tables, Drop-ins  
& Food Shields

## FEATURES & BENEFITS



Tubular Leg  
Design



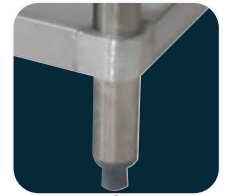
Recessed  
Control Knobs



Stainless Steel  
Liners



Full Cutting  
Board Support



Adjustable Die  
Cast Leg Clamp

### MULTIPLE SYLES AVAILABLE:

- Refrigerated & Hot Well Drop-Ins
- Electric & Gas Operated Hot Food Tables
- Solid Top Tables
- Everyday Buffet Tables
- Ice-cooled Tables
- Mechanically Assisted Refrigerated Tables



## Sleek Shields™

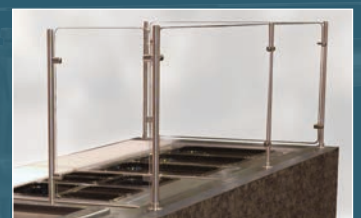
Protected By Patent No. US 9,010,883 B2

### SELF-SERVE & CAFETERIA STYLES AVAILABLE:

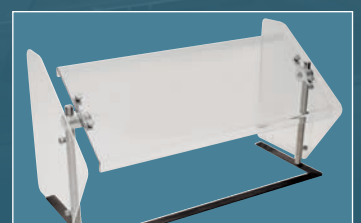
- w/ Stainless Steel Top Shelf
- w/ Glass Top Shelf
- 45° Angled Food Shields
- Stationary w/ Glass Top

**NSF** All Advance Tabco Food Shields Are NSF Approved

### ALSO AVAILABLE Vertical Food Shields



### AND Sleek Shield™ Portable Food Shields





# EXPANSIVE PRODUCT LINE

Over 6,000 Standard Products

Leading National Fabricator

Voted Best-In-Class Since 2001



## Featuring The Largest Selection Of Hand Sinks *In The Industry*

### MULTIPLE SYLES AVAILABLE:

- Standard
- Side Splash
- Soap & Towel Dispenser
- Space-Saving
- Hands-Free
- Security
- A.D.A. Compliant
- Countertop Installed
- Special Purpose
- Large Sink Bowls
- Without Faucets
- Mobile Hand Sink Units



#### Corporate Headquarters:

200 Heartland Boulevard | Edgewood | NY | 11717



800-645-3166



customer@advancetabco.com



www.advancetabco.com